

ROOM RATES

FACILITIES

All rooms are equipped with bath or shower, toilet, hairdryer, bathrobes, slippers, minibar, Sat-TV, telephone, safe, W-Lan and are non-smoker-rooms. Dogs are not allowed in the hotel rooms.

INCLUSIVE

Our hotel tariff is per person and day.

Included are:

- Half board with big and generous breakfast buffet, a selection of cakes in the afternoon, a culinary evening meal with salad-buffet
- indoor pool
- wellness area
- gym
- hotel-kindergarten „Teddy-Club“ for children from 3 years on, baby-beds, baby-joggers, playroom
- garage, internet, youth room

EXCLUSIVE

Local tax Euro 2,40 per person from 15 years on, per day

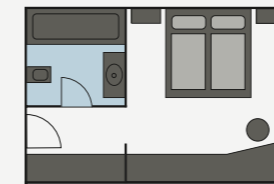
Children on the basis of two full paying adults, in additional bed per day incl. halfboard

0 - 2 years	free
3 - 6 years	EUR 50
7 - 10 years	EUR 66
11 - 14 years	EUR 77

WE OFFER A LOT MORE

- massages, solarium, cosmetics
- babysitter-service
- laundry service
- newspaper service

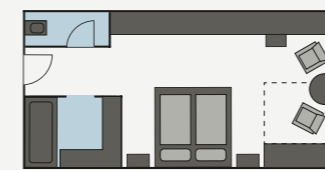
22.12.17 - 07.01.18 10.02. - 03.03.18	02.02. - 10.02.18 03.03. - 17.03.18 24.03. - 07.04.18	07.01. - 14.01.18 17.03. - 24.03.18	15.12. - 22.12.17 14.01. - 02.02.18	07.12. - 15.12.17 07.04. - 15.04.18
--	---	--	--	--



DOUBLE ROOM (approx. 20 m²)

Bedroom with double bed, 1-2 additional beds or cots possible, bathroom with bath and WC.

253	221	199	177	155	from 4 nights
258	231	207	185	161	to 3 nights



COMFORT DOUBLE ROOM (approx. 27 m²)

Bedroom with double bed, living area with seating, 1-2 extra beds or cots possible, bathroom with bath, separate WC.

274	245	220	196	171	from 4 nights
285	254	228	203	177	to 3 nights



JUNIOR SUITE (approx. 35 m²)

Bedroom with double bed, spacious living area, 1-2 extra beds or cots possible (some bunks), bathroom with bath, separate WC.

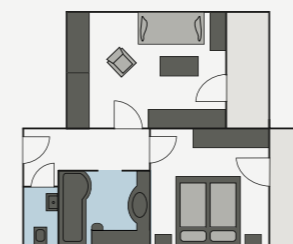
291	260	234	208	182	from 4 nights
302	269	243	215	189	to 3 nights



SINGLE ROOM (approx. 17 - 20 m²)

Bedroom (some with a 4 ft wide single bed), 1-2 additional beds or cots possible, bathroom with bath or shower and WC.

291	260	234	208	182	from 4 nights
302	269	243	215	189	to 3 nights



FAMILY ROOM (approx. 35 - 40 m²)

Bedroom with double bed or four-poster bed, separate children's room or beds in living room (bunks or double sofa bed), walk-in wardrobe, bathroom with bath, separate WC.

310	276	249	221	193	from 4 nights
320	286	256	228	200	to 3 nights

ZUSATZBETT MIT HALBPENSION

143	128	115	102	89
-----	-----	-----	-----	----

APARTMENT RATES



FACILITIES

All apartments are equipped with bath, toilet, hairdryer, bathrobes, slippers, kitchenette with 2 hotplates, refrigerator and dishwasher, Nespresso-machine, tableware, bed linen, towels, dining area, Sat-TV, telephone, safe, W-Lan, balcony (except apartment large with garret). All apartments are non-smoker-apartments.

INCLUSIVE

Our apartment tariff is per day for 4 people.

Included are:

- electricity, heating, VAT
- daily cleaning (except kitchen)
- all hotel amenities (as described on page 36)
- garage

EXCLUSIVE

Local tax Euro 2,40 per person from 15 years on, per day

POSSIBLE OPTIONS

- half-board EUR 81
only bookable for the whole stay
(reduction for cancelled dinners - EUR 10)

POSSIBLE FOR INDIVIDUAL DAYS

- breakfast EUR 24
- dinner EUR 66
- kitchencleaning EUR 26
- dog per day without meal EUR 21

DEDUCTIONS AND SURCHARGES

- deduction for triple occupancy minus EUR 15
- deduction for double occupancy minus EUR 30
- surcharge for 5th person plus EUR 26

CHILDREN POSSIBLE OPTIONS

	breakfast	dinner	halfboard
3 - 6 years	EUR 10	EUR 17	EUR 25
7 - 10 years	EUR 14	EUR 29	EUR 41
11 - 14 years	EUR 19	EUR 38	EUR 51

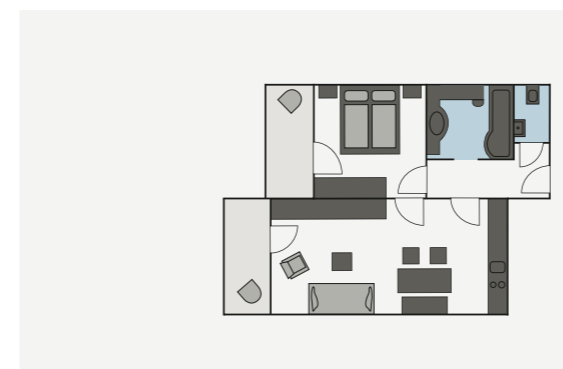
22.12.17 - 07.01.18 10.02. - 03.03.18	02.02. - 10.02.18 03.03. - 17.03.18 24.03. - 07.04.18	07.01. - 14.01.18 17.03. - 24.03.18	15.12. - 22.12.17 14.01. - 02.02.18	07.12. - 15.12.17 07.04. - 15.04.18
--	---	--	--	--



APARTMENT A approx. 50 m² (4 pers.)

1 DBedr., 1 living room + lounge area (2-3 couch/pullout beds possible), kitchenette, dining area, bathroom with bath/shower, sep. WC

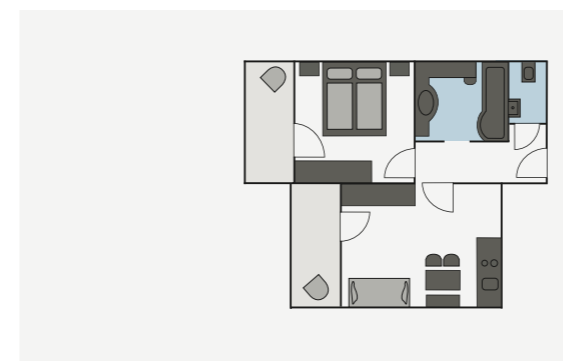
511	456	411	365	319	from 4 nights
531	475	427	383	332	to 3 nights



APARTMENT B approx. 44 m² (4 pers.)

1 DBedr., 1 living room + lounge area (2-3 couch/pullout beds possible), kitchenette, dining area, bathroom with bath/shower, sep. WC

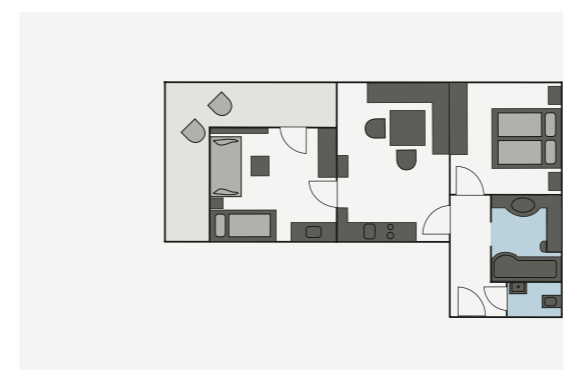
511	456	411	365	319	from 4 nights
531	475	427	383	332	to 3 nights



APARTMENT C approx. 40 m² (4 pers.)

1 DBedr., 1 living room + lounge area (2 couch/pullout beds possible), kitchenette, dining area, bathroom with bath/shower, sep. WC

475	424	382	339	297	from 4 nights
495	443	398	354	309	to 3 nights



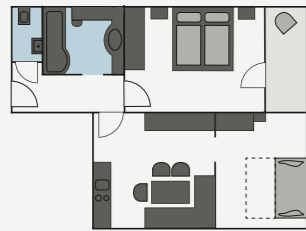
APARTMENT D approx. 54 m² (4 pers.)

1 DBedr., 1 bedroom with 2-3 beds (1 bunkbed, 1 couchbed) and children washing basin, livingroom + dining area, kitchenette, bathroom with bath/shower, sep. WC

571	510	459	408	357	from 4 nights
591	528	475	422	370	to 3 nights

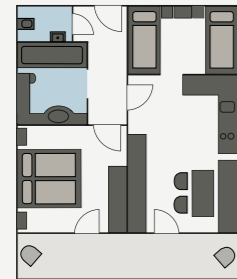
APARTMENT RATES

22.12.17 - 07.01.18 10.02. - 03.03.18	02.02. - 10.02.18 03.03. - 17.03.18 24.03. - 07.04.18	07.01. - 14.01.18 17.03. - 24.03.18	15.12. - 22.12.17 14.01. - 02.02.18	07.12. - 15.12.17 07.04. - 15.04.18
--	---	--	--	--



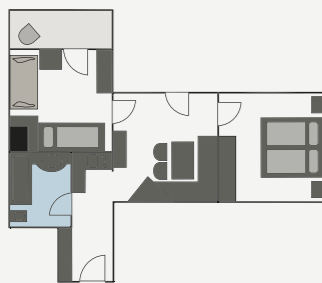
APARTMENT D SOUTH approx. 56 m² (4 pers.)
1 DBedr., 1 bedroom with 2-3 beds (1 bunkbed, 1 double-couchbed), living room + dining area, kitchenette, bathroom with bath/shower, sep. WC

556	496	447	397	348	from 4 nights
577	515	463	412	359	to 3 nights



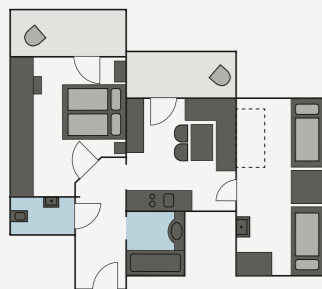
APARTMENT E approx. 44 m² (4 pers.)
1 DBedr., 1 small Bedr. with 2-3 beds (5th bed as a bunkbed), living room + dining area, kitchenette, bathroom with bath/shower, sep. WC

524	468	421	374	327	from 4 nights
544	486	437	389	340	to 3 nights



APARTMENT F approx. 44 m² (4 pers.)
1 DBedr., 1 Bedroom with 2 beds, living room with dinig area, kitchenette, bathroom with bath/shower and WC

535	478	430	382	335	from 4 nights
556	496	447	397	347	to 3 nights



APARTMENT SMALL
approx. 44 m² (4 pers.)
1 DBedr., 1 Bedr. (pitched roof) with 2 beds (5th bed possible), living room with dining area, kitchenette, bathroom with bath/shower, sep. WC

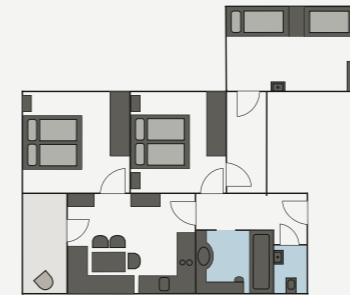
503	449	404	359	314	from 4 nights
523	468	421	374	327	to 3 nights

22.12.17 - 07.01.18 10.02. - 03.03.18	02.02. - 10.02.18 03.03. - 17.03.18 24.03. - 07.04.18	07.01. - 14.01.18 17.03. - 24.03.18	15.12. - 22.12.17 14.01. - 02.02.18	07.12. - 15.12.17 07.04. - 15.04.18
--	---	--	--	--



APARTMENT LARGE approx. 60 m² (4 pers.)
1 DBedr., 1 Bedr. (pitched-roof) with 2 beds (5th bed possible), livingroom with lounge and dining area, kitchenette, bathroom with bath/shower, sep. WC

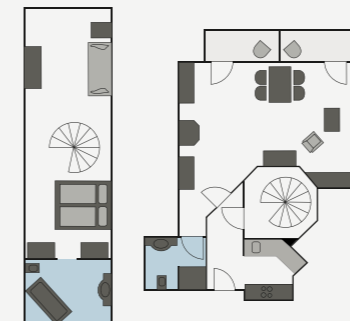
553	493	444	395	345	from 4 nights
573	512	461	409	357	to 3 nights



APARTMENT G approx. 70 m² (6 pers.)
2 DBedr., 1 Bedr. (pitched-roof) with 2 beds (7th bed possible), living room + dining area, kitchenette, bathroom with bath/shower, sep. WC.

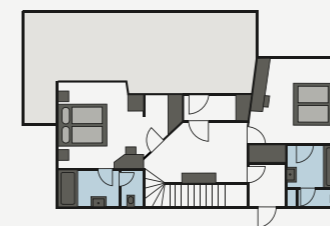
Daily tariff for 6 people

610	545	490	436	381	from 4 nights
630	563	507	450	393	to 3 nights



APARTMENT OMESHORN approx. 85 m² (4 - 5 pers.)
Situated in our „Schöpfli“ opposite the hotel.
Ground floor: kitchen, living room + couchbed for 2 people, dining area + small bathroom with shower/WC. 1st floor: DBedr., living room + couchbed, bathroom with tub. Total 4-5 people.

655	585	527	468	410	from 4 nights
676	604	543	482	422	to 3 nights



CHALET approx. 115 m² (7 pers.)
2 floors in a separat building opposite the hotel but with an access to the hotel and swimmingpool. 3 DBedr. with bath/WC, 1 SBedr. with shower/WC, livingroom, kitchen, dining area, balcony and terrasse, shoerom, washingmaschine and dryer.
price for 7 people

1.309	925	832	740	647	from 4 nights
1.340	953	857	762	666	to 3 nights



BOOKING INFORMATION

SECURING RESERVATIONS

In order to secure your reservation, we ask that you send us a written acknowledgement within 10 days of receiving your booking confirmation.

CANCELLATION POLICY

In accordance with Austrian hotel regulations, the following cancellation fees shall be charged in the case of cancellation:

- At the latest 3 months before arrival: no fee
- Up to 1 month before arrival: 40% of the total price for the booked accommodations
- Up to 1 week before arrival: 70% of the total price for the booked accommodations
- And in the last week before arrival: 90% of the total price for the booked accommodations
- Early departure: 100% of the total price for the nights booked

The cancellation fee shall not apply for nights that are rebooked. Court of Jurisdiction: Bludenz

TRAVEL CANCELLATION INSURANCE

In order to avoid any inconveniences in the case of cancellation, we recommend that you take out a travel cancellation insurance policy, unless you already have insurance that covers this. We are happy to offer you „Hotelstorno Plus“ from Europäische Reiseversicherung. On request and with each booking you will get more information. We ask you to let us know directly with your reconfirmation if we should book the insurance for you.

DEPOSIT

In order to secure your reservation, we ask that you make a deposit amounting to 25% of the booked accommodations. The following payment methods are available:

- Bank transfer to our account at Raiffeisenbank Lech, account number: 12831, sorting code: 37449, IBAN: AT90 3744 9000 0001 2831, SWIFT: RVVGAT2B449
- Credit card payment by entering your credit card number and expiration date (MasterCard or Visa accepted)

PAYMENT OPTIONS

We will be happy to accept cash (euros), EC cards from Austria, Germany and the Netherlands, and credit cards (MasterCard and Visa).

CHECK-IN/CHECK-OUT

Your room/apartment will be ready for check-in at 3:00 pm on the day of arrival. We ask that you vacate your room/apartment by 11:00 am on the day of departure.

AND THAT'S HOW YOU CAN FIND US

Coming from Zürs direction Lech approx. 100m after the village sign 'Lech' take the first possible road to the left (Omberg), then the next road top the right and after that straight ahead.

Address to enter into your navigation device:
Omberg 287,
6764 Lech

ATTENTION:

Don't forget the toll sticker for Austria's motorways! The road between Warth and Lech is closed during winter.

