

HOTEL ROOM RATES

ROOM FEATURES AND FURNISHINGS

All apartments feature a bathroom, WC, kitchenette with double burner stove top, refrigerator, dishwasher, Nespresso machine, bathrobe(s) and slippers, dining corner, bed linen, hair dryer, Satellite TV, telephone, safe, and WLAN. Dogs are not allowed in the hotel.

INCLUSIVE

The hotel rate is in Euro per person per day.

Included are

- Half-board with a large breakfast buffet, afternoon cake, 6-course evening menu (deduction for cancelled dinner EUR 10)
- Use of the pool facilities
- Use of the wellness area
- Fitness room
- Hotel kindergarten "Teddy Club" children above 3 years of age; baby cot, baby jogger, children's playroom, youth room
- Use of garage, WLAN

EXCLUSIVE

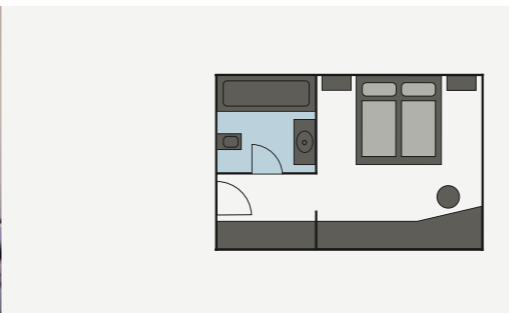
Local tourist tax EURO 2,40 per person from age 14, per day.

Extra bed for children with two adults paying in full, per day incl. half board

0 - 2 years of age	no charge
3 - 6 years of age	EUR 28
7 - 10 years of age	EUR 38
11 - 14 years of age	EUR 48

ADDITIONAL SERVICES

- Massages, Solarium, Cosmetic treatments
- Babysitter service
- Laundry service
- Newspaper service



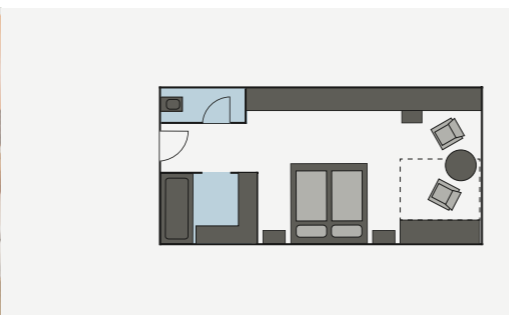
22.06. - 14.07.18
25.08. - 09.09.18

14.07. - 25.08.18

DOUBLE ROOM (approx. 20 m²)

Bath/WC, Satellite TV, Telephone, Safe, Minibar, WLAN

99	108	from 4 nights
102	111	to 3 nights



COMFORT DOUBLE ROOM (approx. 27 m²)

Bath, sep. WC, Satellite TV, Telephone, Safe, Minibar, WLAN

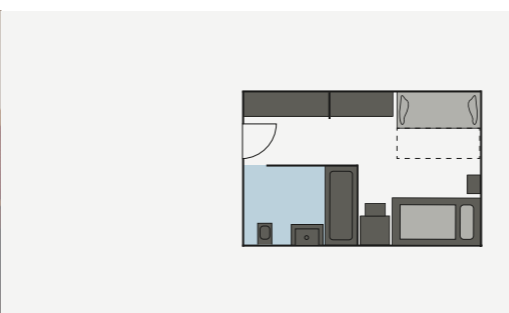
108	118	from 4 nights
111	122	to 3 nights



JUNIOR SUITE (approx. 35 m²)

Bath, sep. WC, large living area, Satellite TV, Telephone, Safe, Minibar, WLAN

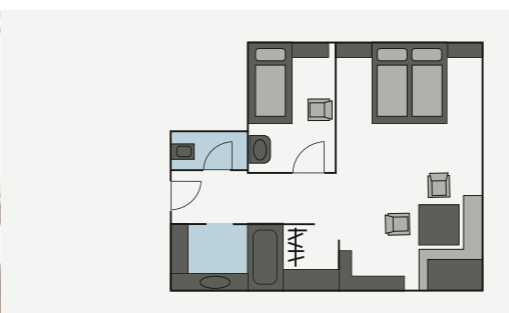
118	130	from 4 nights
122	133	to 3 nights



SINGLE ROOM (approx. 17 - 20 m²)

Bath or shower/WC, Satellite TV, Telephone, Safe, Minibar, WLAN

118	130	from 4 nights
122	133	to 3 nights



FAMILY ROOM (approx. 35 - 40 m²)

Children's room sep. or in the living area, Bath/WC, Satellite TV, Telephone, Safe, Minibar, WLAN

132	143	from 4 nights
135	146	to 3 nights

EXTRA BED WITH HALF BOARD

64	69
----	----

APARTMENT RATES



ROOM FEATURES AND FURNISHINGS

All apartments feature a bathroom, WC, kitchenette with double burner stove top, refrigerator, dish washer, Nespresso machine, bathrobe(s) and slippers, dining corner, bed linen, hair dryer, Satellite TV, telephone, safe, WLAN and Balcony (except for "Large Attic Apartment"). All apartments are non-smoking apartments.

INCLUSIVE

The apartment rate is in Euro per day for 4 persons (except for Apartment G and the Chalet). Included are

- Electricity, Heat, VAT
- Daily cleaning (except kitchen) and final cleaning
- All amenities offered by the hotel (see page 36)
- Garage space

EXCLUSIVE

Local tourist tax EURO 2,40 per person from age 14, per day.

OPTIONAL

- Half board EUR 66
- Deduction for reserved dinner EUR 10

OPTIONAL FOR SELECT DAYS

- Breakfast EUR 21
- Dinner EUR 54
- Kitchen cleaning EUR 15
- Dog per day without food EUR 18

LOWER - OR ADDITIONAL OCCUPANCY

- Occupancy with only 3 persons minus EUR 10
- Occupancy with only 2 persons minus EUR 20
- Occupancy for additional 5th person EUR 15

ADDITIONAL OPTIONS FOR CHILDREN

	Child breakfast	Child dinner	Child half board
3 - 6 years	EUR 9	EUR 15	EUR 20
7 - 10 years	EUR 12	EUR 21	EUR 30
11 - 14 years	EUR 16	EUR 30	EUR 40

22.06. - 14.07.18
25.08. - 09.09.18

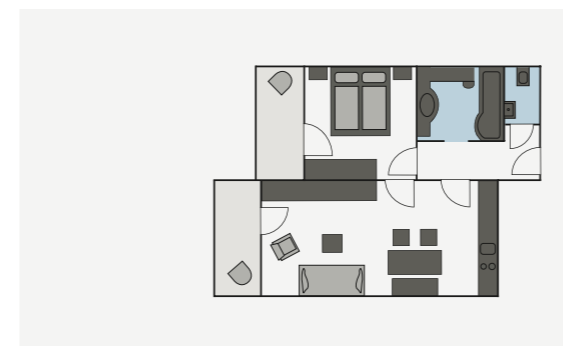
14.07. - 25.08.18



APARTMENT A approx. 50 m² (4 Pers.)

1 Bedroom, 1 Living room with seating corner (2 - 3 Sofa beds possible), Kitchenette, Dining area, Bath with tub/shower, sep. WC, Satellite TV, Telephone, Safe, WLAN

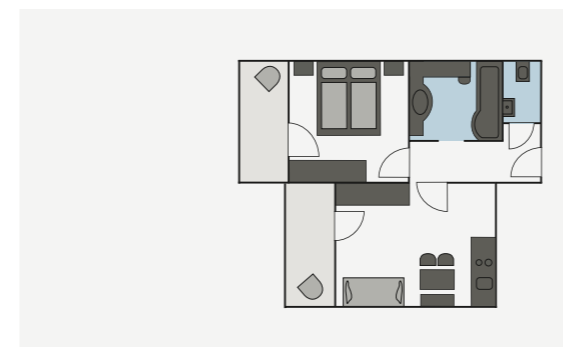
146	173	from 4 nights
152	179	to 3 nights



APARTMENT B approx. 44 m² (4 Pers.)

1 Bedroom, 1 Living room with seating corner (2 - 3 Sofa beds possible), Kitchenette, Dining area, Bath with tub/shower, sep. WC, Satellite TV, Telephone, Safe, WLAN

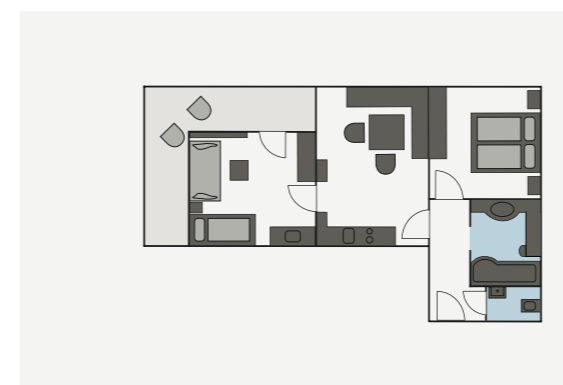
146	173	from 4 nights
152	179	to 3 nights



APARTMENT C approx. 40 m² (4 Pers.)

1 Bedroom, 1 Living room with seating corner 2 Sofa beds possible), Kitchenette, Dining area, Bath with tub/shower, sep. WC, Satellite TV, Telephone, Safe, WLAN

127	153	from 4 nights
133	160	to 3 nights



APARTMENT D approx. 54 m² (4 Pers.)

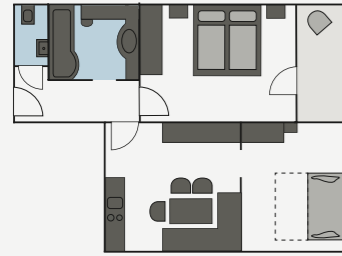
1 Bedroom, 1 Children's room with 2 - 3 beds (1 Bunk bed , 1 Sofa bed) and children's wash basin, 1 Living room with Dining area, Kitchenette, Bath with tub/shower, sep. WC, Satellite TV, Telephone, Safe, WLAN

183	216	from 4 nights
190	222	to 3 nights

APARTMENT RATES

22.06. - 14.07.18
25.08. - 09.09.18

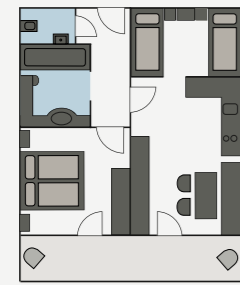
14.07. - 25.08.18



APARTMENT D SOUTH approx. 56 m² (4 Pers.)

1 Bedroom, 1 Children's room with 2 - 3 Beds (1 Bunk bed, 1 Double Sofa bed), 1 Living room with dining corner, Kitchenette, Bath with tub/shower, sep. WC, Satellite TV Telephone, Safe, WLAN

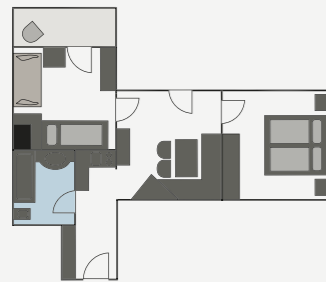
174	207	from 4 nights
180	213	to 3 nights



APARTMENT E approx. 44 m² (4 Pers.)

1 Bedroom, 1 small Children's room with 2 - 3 Beds (5. Bed as Bunk bed possible), Living room with dining corner, Kitchenette, Bath with tub/shower, sep. WC, Satellite TV Telephone, Safe, WLAN

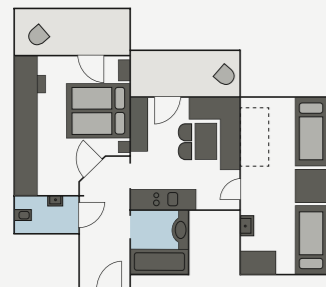
153	183	from 4 nights
160	190	to 3 nights



APARTMENT F approx. 44 m² (4 Pers.)

1 Bedroom, 1 Children's room with 2 - 3 Beds (1 Bunk bed, 1 Sofa bed), Living room with dining corner, Kitchenette, Bath with tub/shower and WC, Satellite TV, Telephone, Safe, WLAN

172	205	from 4 nights
178	211	to 3 nights



APARTMENT SMALL WITH ATTIC ROOM

approx. 44 m² (4 Pers.)

1 Bedroom, 1 children's room (slanted ceiling) with 2 Beds (5. bed possible), Living room with dining corner, Kitchenette, Bath with tub/shower, sep. WC, Satellite TV Telephone, Safe, WLAN

145	173	from 4 nights
152	179	to 3 nights

22.06. - 14.07.18
25.08. - 09.09.18

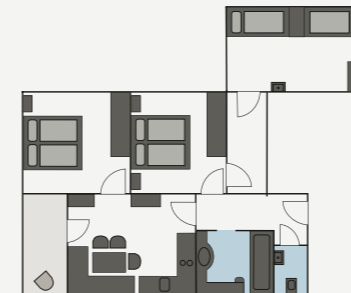
14.07. - 25.08.18



APARTMENT LARGE WITH ATTIC ROOM approx. 60 m² (4 Pers.)

1 Bedroom, 1 Children's room (slanted ceiling) with 2 Beds (5. Bed possible), Living room with seating corner and dining corner (2 Sofa beds possible), Kitchenette, Bath with tub/shower, sep. WC, Satellite TV Telephone, Safe, WLAN

170	201	from 4 nights
176	207	to 3 nights

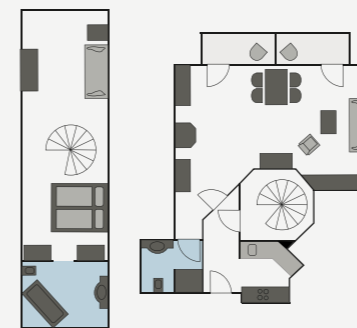


APARTMENT G approx. 70 m² (6 Pers.)

2 Bedroom, 1 Children's room (slanted ceiling) with 2 Beds (7. Bed possible), Living room with dining corner, Kitchenette, Bath with tub/shower, sep. WC, Satellite TV Telephone, Safe, WLAN

Rate for 6 Persons

207	240	from 4 nights
215	246	to 3 nights

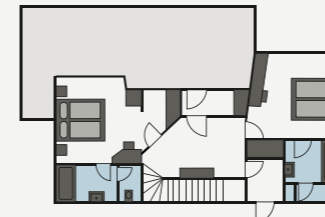


APARTMENT OMESHORN approx. 85 m² (4 - 5 Pers.)

In the "Schöpfung" house opposite the main house.

1st floor: Kitchen, Living room with pull-out sofa bed for 2 persons, Dining area, small Bath with shower/WC, Satellite TV, Telephone, Safe, WLAN 2nd floor: Bedroom, Bath/tub/WC, Living room with Sofa bed.

209	241	from 4 nights
216	248	to 3 nights



THE CHALET approx. 115 m² (7 Pers.)

2 Floors directly opposite the hotel with direct access to the hotel and indoor swimming pool. 3 Double rooms with Bath/WC, 1 Single room with shower/WC, Living room, Kitchen, Dining corner, Balcony and Terrace, Shoe storage room, Satellite TV, Telephone, Safe, WLAN

Rate for 7 Persons

269	312	from 4 nights
279	322	to 3 nights