

ROOM RATES



FACILITIES

All rooms are equipped with bath or shower, toilet, hairdryer, bathrobes, slippers, minibar, TV, Suite-Pad, telephone, safe, WIFI and are non-smoker-rooms. Dogs are not allowed in the hotel rooms.

INCLUSIVE

Our hotel tariff is per person and day.

Included are:

- Half board with big and generous breakfast buffet
- a selection of cakes in the afternoon
- a culinary evening meal with salad-buffet (deduction for cancelled dinner EUR 10)
- indoor pool
- wellness area
- gym
- hotel-kindergarten „Teddy-Club“ for children from 3 years on, baby-beds, baby-joggers, playroom
- garage, internet, youth room

EXCLUSIVE

Local tax Euro 2,40 per person from 14 years on, per day

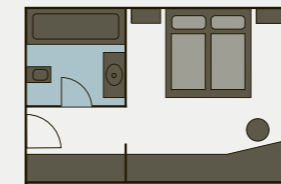
Children on the basis of two full paying adults, in additional bed per day incl. half board

0 - 2 years	free
3 - 6 years	EUR 53
7 - 10 years	EUR 69
11 - 14 years	EUR 81

WE OFFER A LOT MORE

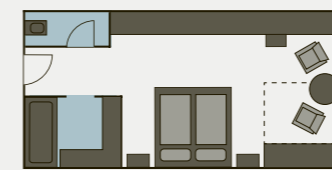
- massages, solarium
- babysitter-service
- laundry service
- newspaper service

21.12. - 05.01.20	31.01. - 15.02.20	05.01. - 12.01.20	12.01. - 31.01.20	06.12. - 21.12.19
15.02. - 29.02.20	29.02. - 14.03.20	14.03. - 21.03.20	21.03. - 28.03.20	
	04.04. - 13.04.20	28.03. - 04.04.20	13.04. - 19.04.20	



DOUBLE ROOM (approx. 20 m²)
double bed, bathroom with bath and toilet, TV, telephone, safe, minibar, WIFI, Suite-pad

266	232	209	186	162	from 4 nights
271	243	217	195	169	to 3 nights



COMFORT DOUBLE ROOM (approx. 27 m²)
double bed, living area with seating, bathroom with bath and separate toilet, TV, telephone, safe, minibar, WIFI, Suite-pad

287	258	231	206	179	from 4 nights
300	267	240	213	186	to 3 nights



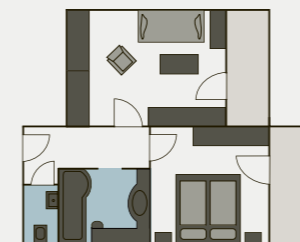
JUNIOR SUITE (approx. 35 m²)
generous living area with seating, bathroom with bath and separate toilet, TV, telephone, safe, minibar, WIFI, Suite-pad

306	273	246	218	192	from 4 nights
317	282	255	226	199	to 3 nights



SINGLE ROOM (approx. 17 - 20 m²)
bathroom with bath and separate toilet, TV, telephone, safe, minibar, WIFI, Suite-pad

306	273	246	218	192	from 4 nights
317	282	255	226	199	to 3 nights



FAMILY ROOM (approx. 35 - 40 m²)
separate children's room or beds in living room, walk in-wardrobe, bathroom with bath and separate toilet, TV, telephone, safe, minibar, WIFI, Suite-pad

325	290	262	232	203	from 4 nights
336	301	269	240	210	to 3 nights

ADDITIONAL BED WITH HALF BOARD

150	135	121	107	94
-----	-----	-----	-----	----

APARTMENT RATES



FACILITIES

All apartments are equipped with bath, toilet, hairdryer, bathrobes, slippers, kitchenette with 2 hotplates, refrigerator and dishwasher, Nespresso-machine, tableware, bed linen, towels, dining area, TV, telephone, safe, W-Lan, Suite-Pad, balcony (except apartment large with garret). All apartments are non-smoker-apartments.

INCLUSIVE

Our apartment tariff is per day for 4 people. Included are:

- electricity, heating, VAT
- daily cleaning (except kitchen)
- all hotel amenities (as described on page 36)
- garage

EXCLUSIVE

Local tax Euro 2,40 per person from 14 years on, per day

POSSIBLE OPTIONS

- half-board EUR 85
only bookable for the whole stay
(reduction for cancelled dinners - EUR 10)

POSSIBLE FOR INDIVIDUAL DAYS

- breakfast EUR 26
- dinner EUR 70
- kitchencleaning EUR 28
- dog per day without meal EUR 25

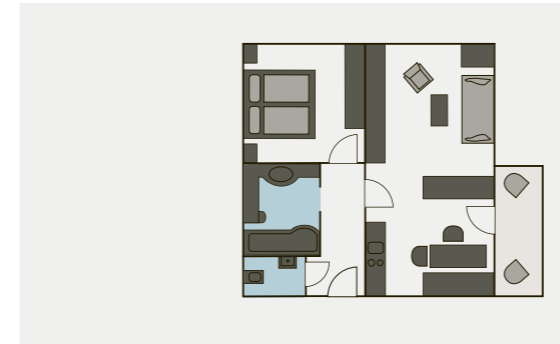
DEDUCTIONS AND SURCHARGES

- deduction for triple occupancy minus EUR 15
- deduction for double occupancy minus EUR 30
- surcharge for 5th person plus EUR 30

CHILDREN POSSIBLE OPTIONS

	breakfast	dinner	half board
3 - 6 years	EUR 11	EUR 19	EUR 27
7 - 10 years	EUR 16	EUR 31	EUR 43
11 - 14 years	EUR 21	EUR 41	EUR 57

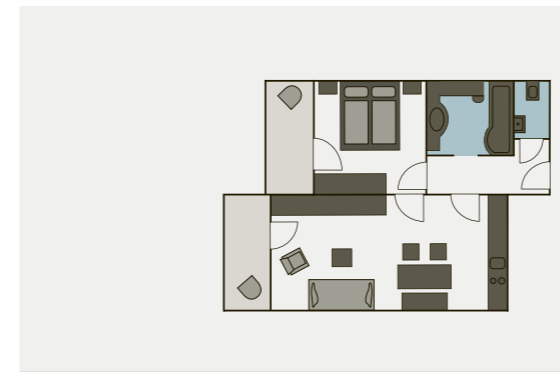
21.12. - 05.01.20 15.02. - 29.02.20	31.01. - 15.02.20 29.02. - 14.03.20 04.04. - 13.04.20	05.01. - 12.01.20 14.03. - 21.03.20 28.03. - 04.04.20	12.01. - 31.01.20 21.03. - 28.03.20 13.04. - 19.04.20	06.12. - 21.12.19
--	---	---	---	-------------------



APARTMENT A

approx. 50 m² (4 pers.)
1 double room, 1 living room + lounge area (2 - 3 couch/pullout beds possible), kitchenette, dining area, bathroom with bath/shower and separate toilet, TV, telephone, safe, WIFI, Suite-Pad

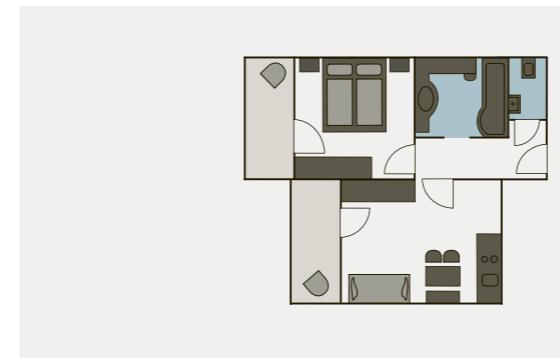
542	484	436	387	329	from 4 nights
563	504	453	406	342	to 3 nights



APARTMENT B

approx. 44 m² (4 pers.)
1 double room, 1 living room + lounge area (2 - 3 couch/pullout beds possible), kitchenette, dining area, bathroom with bath/shower and separate toilet, TV, telephone, safe, WIFI, Suite-Pad

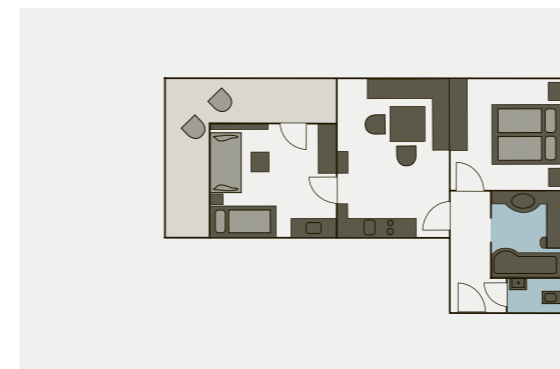
542	484	436	387	329	from 4 nights
563	504	453	406	342	to 3 nights



APARTMENT C

approx. 40 m² (4 pers.)
1 double room, 1 living room + lounge area (2 - 3 couch/pullout beds possible), kitchenette, dining area, bathroom with bath/shower and separate toilet, TV, telephone, safe, WIFI, Suite-Pad

504	450	405	359	306	from 4 nights
525	470	422	376	318	to 3 nights



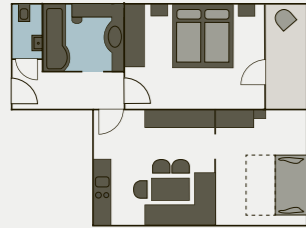
APARTMENT D

approx. 54 m² (4 - 5 pers.)
1 double room, 1 bedroom with 2 - 3 beds (1 bunk bed, 1 couch bed) and children washing basin, livingroom + dining area, kitchenette, bathroom with bath/shower and separate toilet, TV, telephone, safe, WIFI, Suite-Pad

606	541	487	433	368	from 4 nights
627	560	504	448	381	to 3 nights

APARTMENT RATES

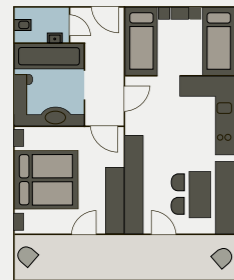
21.12. - 05.01.20 15.02. - 29.02.20	31.01. - 15.02.20 29.02. - 14.03.20 04.04. - 13.04.20	05.01. - 12.01.20 14.03. - 21.03.20 28.03. - 04.04.20	12.01. - 31.01.20 21.03. - 28.03.20 13.04. - 19.04.20	06.12. - 21.12.19
--	---	---	---	-------------------



APARTMENT D SOUTH approx. 56 m² (4 - 5 pers.)

1 double room, 1 bedroom with 2 - 3 beds (1 high bed) 1 double couch bed, living room + dining area, kitchenette, bathroom with bath/shower and separate toilet, TV, telephone, safe, WIFI, Suite-Pad

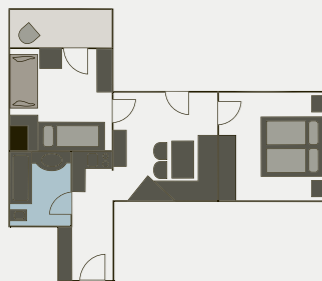
590	526	474	421	358	from 4 nights
612	546	491	437	370	to 3 nights



APARTMENT E approx. 44 m² (4 - 5 pers.)

1 double room, 1 small bedroom with 2 - 3 beds (5th bed as a bunk bed), living room + dining area, kitchenette, bathroom with bath/shower and separate toilet, TV, telephone, safe, WIFI, Suite-Pad

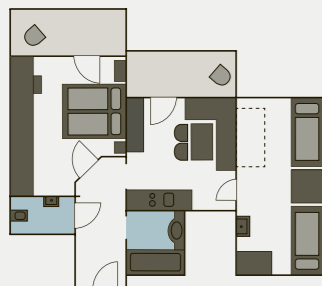
556	496	447	397	337	from 4 nights
577	516	464	413	350	to 3 nights



APARTMENT F approx. 44 m² (4 pers.)

1 double room, 1 bedroom with 2 beds, living room with dining area, kitchenette, bathroom with bath/shower and toilet, TV, telephone, safe, WIFI, Suite-Pad

568	507	456	405	345	from 4 nights
590	526	474	421	357	to 3 nights

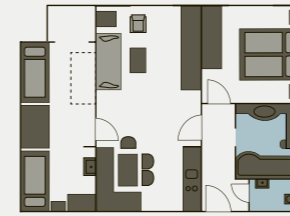


APARTMENT SMALL approx. 44 m² (4 pers.)

1 double room, 1 bedroom (pitched roof) with 2 beds (5th bed possible), living room with dining area, kitchenette, bathroom with bath/shower and separate toilet, TV, telephone, safe, WIFI, Suite-Pad

534	476	428	381	323	from 4 nights
555	496	447	397	337	to 3 nights

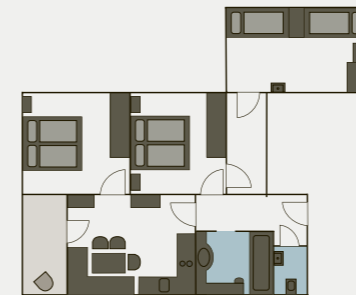
21.12. - 05.01.20 15.02. - 29.02.20	31.01. - 15.02.20 29.02. - 14.03.20 04.04. - 13.04.20	05.01. - 12.01.20 14.03. - 21.03.20 28.03. - 04.04.20	12.01. - 31.01.20 21.03. - 28.03.20 13.04. - 19.04.20	06.12. - 21.12.19
--	---	---	---	-------------------



APARTMENT LARGE approx. 60 m² (4 - 5 pers.)

1 double room, 1 bedroom (pitched roof) with 2 beds (5th bed possible), livingroom with lounge and dining area, kitchenette, bathroom with bath/shower and separate toilet, TV, telephone, safe, WIFI, Suite-Pad

587	523	471	419	355	from 4 nights
608	543	489	434	368	to 3 nights

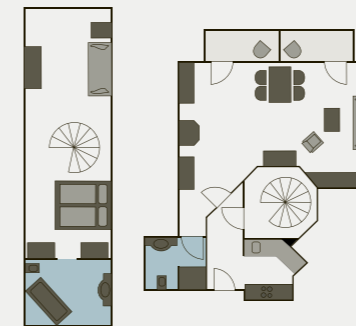


APARTMENT G approx. 70 m² (6 pers.)

2 double room, 1 bedroom (pitched roof) with 2 beds (7th bed possible), living room + dining area, kitchenette, bathroom with bath/shower and separate toilet, TV, telephone, safe, WIFI, Suite-Pad

Daily tariff for 6 people

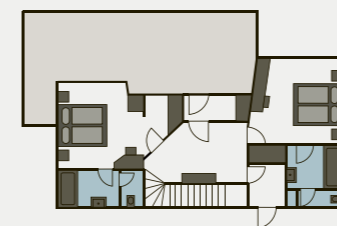
647	578	520	462	392	from 4 nights
668	597	538	478	405	to 3 nights



APARTMENT OMESHORN approx. 85 m² (4 - 5 pers.)

situated in our „Schöpfli“ opposite the hotel. Ground floor: kitchen, living room + couch bed for 2 people, dining area + small bathroom with shower/toilet. First floor: double room, living room + couch bed, bathroom with tub. TV, telephone, safe, WIFI, Suite-Pad

695	621	559	496	422	from 4 nights
717	641	576	511	435	to 3 nights



CHALET approx. 115 m² (7 pers.)

2 floors in a separate building opposite the hotel but with an access to the hotel and swimmingpool. 3 double room with bath/toilet, 1 single room with shower/toilet, livingroom, kitchen, dining area, balcony and terrasse, shoeroom, washing machine and dryer.

TV, telephone, safe, WIFI, Suite-Pad

price for 7 people

1.388	982	883	785	666	from 4 nights
1.421	1.011	909	809	686	to 3 nights



BOOKING INFORMATION

SECURING RESERVATIONS

In order to secure your reservation, we ask that you send us a written acknowledgement within 10 days of receiving your booking confirmation.

CANCELLATION POLICY

In accordance with Austrian hotel regulations, the following cancellation fees shall be charged in the case of cancellation:

- At the latest 3 months before arrival: no fee
- Up to 1 month before arrival: 40% of the total price for the booked accommodations
- Up to 1 week before arrival: 70% of the total price for the booked accommodations
- And in the last week before arrival: 90% of the total price for the booked accommodations
- Early departure: 100% of the total price for the nights booked

The cancellation fee shall not apply for nights that are rebooked. Court of Jurisdiction: Bludenz

TRAVEL CANCELLATION INSURANCE

In order to avoid any inconveniences in the case of cancellation, we recommend that you take out a travel cancellation insurance policy, unless you already have insurance that covers this. We are happy to offer you „Hotelstorno Plus“ from Europäische Reiseversicherung. On request and with each booking you will get more information. We ask you to let us know directly with your reconfirmation if we should book the insurance for you.

DEPOSIT

To secure your reservation, we ask you to make a deposit amounting to 25% of the booked accommodations. With the booking confirmation you will receive a link to easily pay your deposit online (Visa/Master/Maestro/Bank transfer).

- Bank transfer to our account at Raiffeisenbank Lech, account number: 12831, sorting code: 37449, IBAN: AT90 3744 9000 0001 2831, SWIFT: RYVVGAT2B449

PAYMENT OPTIONS

We will be happy to accept cash (euros), EC cards from Austria, Germany and the Netherlands, and credit cards (MasterCard and Visa).

CHECK-IN/CHECK-OUT

Your room/apartment will be ready for check-in at 3:00 pm on the day of arrival. We ask that you vacate your room/apartment by 11:00 am on the day of departure.

AND THAT'S HOW YOU CAN FIND US

Coming from Zürs direction Lech approx. 100m after the village sign 'Lech' take the first possible road to the left (Omberg), then the next road top the right and after that straight ahead.

Address to enter into your navigation device:
Omberg 287,
6764 Lech

ATTENTION:

Don't forget the toll sticker for Austria's motorways! The road between Warth and Lech is closed during winter.

