

ROOM RATES

FACILITIES

All rooms are equipped with bath or shower, toilet, hairdryer, bathrobes, slippers, minibar, TV, Suite-Pad, telephone, safe, WIFI and are non-smoker-rooms. Dogs are not allowed in the hotel rooms.

INCLUSIVE

Our hotel tariff is per person and day.

Included are:

- Half board with big and generous breakfast buffet, a selection of cakes in the afternoon, a culinary evening meal with salad-buffet
- indoor pool
- wellness area
- gym
- hotel-kindergarten „Teddy-Club“ for children from 3 years on, baby-beds, baby-joggers, playroom
- garage, internet, youth room

EXCLUSIVE

Local tax Euro 2,40 per person from 14 years on, per day

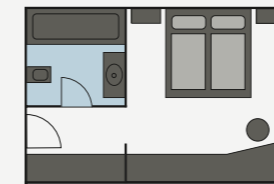
Children on the basis of two full paying adults, in additional bed per day incl. half board

0 - 2 years	free
3 - 6 years	EUR 51
7 - 10 years	EUR 67
11 - 14 years	EUR 79

WE OFFER A LOT MORE

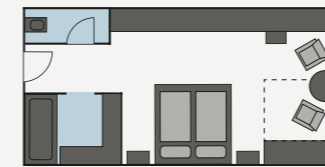
- massages, solarium
- babysitter-service
- laundry service
- newspaper service

21.12.18 - 06.01.19 16.02. - 09.03.19	01.02. - 16.02.19 09.03. - 16.03.19	06.01. - 13.01.19 16.03. - 23.03.19 30.03. - 23.04.19	14.12. - 21.12.18 13.01. - 01.02.19 23.03. - 30.03.19	07.12. - 14.12.18
--	--	---	---	-------------------



DOUBLE ROOM (approx. 20 m²)
double bed, bathroom with bath and toilet, TV, telephone, safe, minibar, WIFI, Suite-pad

258	225	203	181	158	from 4 nights
263	236	211	189	164	to 3 nights



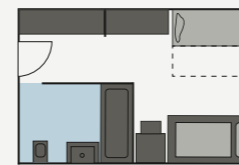
COMFORT DOUBLE ROOM (approx. 27 m²)
double bed, living area with seating, bathroom with bath and separate toilet, TV, telephone, safe, minibar, WIFI, Suite-pad

279	250	224	200	174	from 4 nights
291	259	233	207	181	to 3 nights



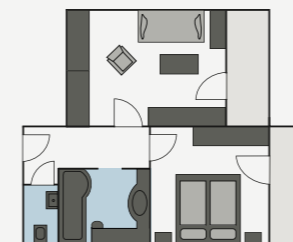
JUNIOR SUITE (approx. 35 m²)
generous living area with seating, bathroom with bath and separate toilet, TV, telephone, safe, minibar, WIFI, Suite-pad

297	265	239	212	186	from 4 nights
308	274	248	219	193	to 3 nights



SINGLE ROOM (approx. 17 - 20 m²)
bathroom with bath and separate toilet, TV, telephone, safe, minibar, WIFI, Suite-pad

297	265	239	212	186	from 4 nights
308	274	248	219	193	to 3 nights



FAMILY ROOM (approx. 35 - 40 m²)
separate children's room or beds in living room, walk in-wardrobe, bathroom with bath and separate toilet, TV, telephone, safe, minibar, WIFI, Suite-pad

316	282	254	225	197	from 4 nights
326	292	261	233	204	to 3 nights

ADDITIONAL BED WITH HALF BOARD

146	131	117	104	91
-----	-----	-----	-----	----

APARTMENT RATES



FACILITIES

All apartments are equipped with bath, toilet, hairdryer, bathrobes, slippers, kitchenette with 2 hotplates, refrigerator and dishwasher, Nespresso-machine, tableware, bed linen, towels, dining area, TV, telephone, safe, W-Lan, Suite-Pad, balcony (except apartment large with garret). All apartments are non-smoker-apartments.

INCLUSIVE

Our apartment tariff is per day for 4 people. Included are:

- electricity, heating, VAT
- daily cleaning (except kitchen)
- all hotel amenities (as described on page 36)
- garage

EXCLUSIVE

Local tax Euro 2,40 per person from 14 years on, per day

POSSIBLE OPTIONS

- half-board EUR 83
only bookable for the whole stay
(reduction for cancelled dinners - EUR 10)

POSSIBLE FOR INDIVIDUAL DAYS

- breakfast EUR 25
- dinner EUR 68
- kitchencleaning EUR 27
- dog per day without meal EUR 22

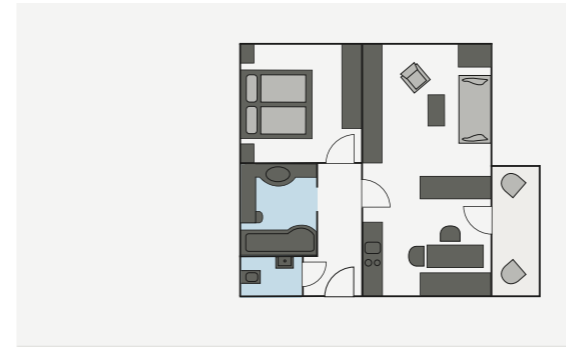
DEDUCTIONS AND SURCHARGES

- deduction for triple occupancy minus EUR 15
- deduction for double occupancy minus EUR 30
- urcharge for 5th person plus EUR 30

CHILDREN POSSIBLE OPTIONS

	breakfast	dinner	half board
3 - 6 years	EUR 10	EUR 18	EUR 26
7 - 10 years	EUR 15	EUR 30	EUR 42
11 - 14 years	EUR 20	EUR 40	EUR 54

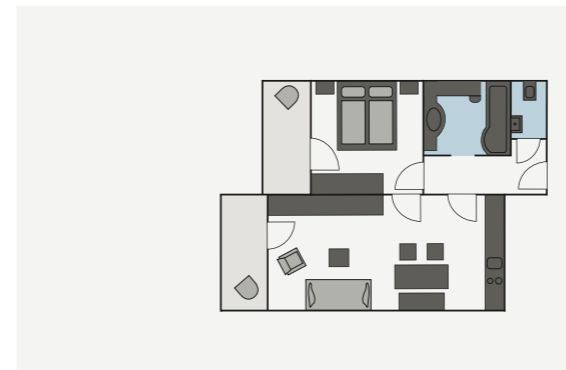
21.12.18 - 06.01.19 16.02. - 09.03.19	01.02. - 16.02.19 09.03. - 16.03.19	06.01. - 13.01.19 16.03. - 23.03.19 30.03. - 23.04.19	14.12. - 21.12.18 13.01. - 01.02.19 23.03. - 30.03.19	07.12. - 14.12.18
--	--	---	---	-------------------



APARTMENT A

approx. 50 m² (4 pers.)
1 double room, 1 living room + lounge area (2-3 couch/pullout beds possible), kitchenette, dining area, bathroom with bath/shower and seperate toilet, TV, telephone, safe, WIFI, Suite-Pad

526	470	423	376	319	from 4 nights
547	489	440	394	332	to 3 nights



APARTMENT B

approx. 44 m² (4 pers.)
1 double room, 1 living room + lounge area (2-3 couch/pullout beds possible), kitchenette, dining area, bathroom with bath/shower and seperate toilet, TV, telephone, safe, WIFI, Suite-Pad

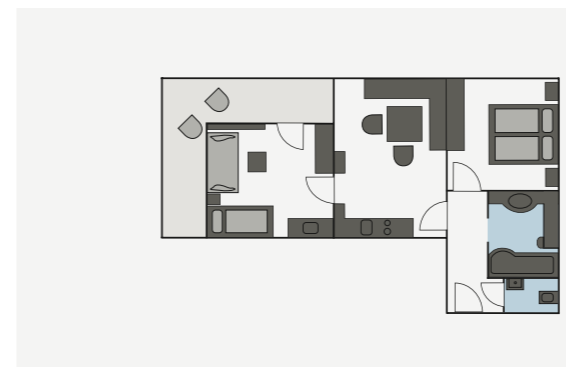
526	470	423	376	319	from 4 nights
547	489	440	394	332	to 3 nights



APARTMENT C

approx. 40 m² (4 pers.)
1 double room, 1 living room + lounge area (2-3 couch/pullout beds possible), kitchenette, dining area, bathroom with bath/shower and seperate toilet, TV, telephone, safe, WIFI, Suite-Pad

489	437	393	349	297	from 4 nights
510	456	410	365	309	to 3 nights



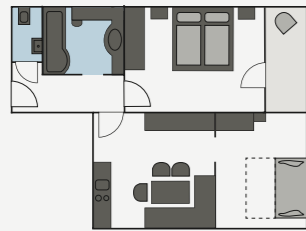
APARTMENT D

approx. 54 m² (4 pers.)
1 double room, 1 bedroom with 2-3 beds (1 bunk bed, 1 couch bed) and children washing basin, livingroom + dining area, kitchenette, bathroom with bath/shower and seperate toilet, TV, telephone, safe, WIFI, Suite-Pad

588	525	473	420	357	from 4 nights
609	544	489	435	370	to 3 nights

APARTMENT RATES

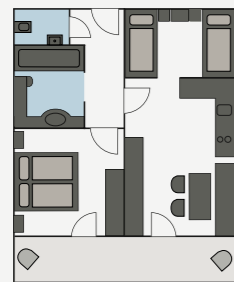
21.12.18 - 06.01.19 16.02. - 09.03.19	01.02. - 16.02.19 09.03. - 16.03.19	06.01. - 13.01.19 16.03. - 23.03.19 30.03. - 23.04.19	14.12. - 21.12.18 13.01. - 01.02.19 23.03. - 30.03.19	07.12. - 14.12.18
--	--	---	---	-------------------



APARTMENT D SOUTH approx. 56 m² (4 pers.)

1 double room, 1 bedroom with 2-3 beds (1 bunk bed, 1 double couch bed), living room + dining area, kitchenette, bathroom with bath/shower and separate toilet, TV, telephone, safe, WIFI, Suite-Pad

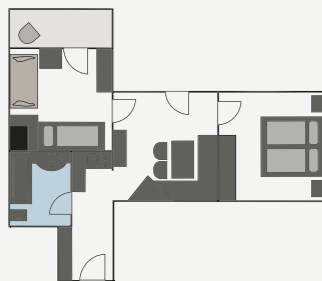
573	511	460	409	348	from 4 nights
594	530	477	424	359	to 3 nights



APARTMENT E approx. 44 m² (4 pers.)

1 double room, 1 small bedroom with 2-3 beds (5th bed as a bunk bed), living room + dining area, kitchenette, bathroom with bath/shower and separate toilet, TV, telephone, safe, WIFI, Suite-Pad

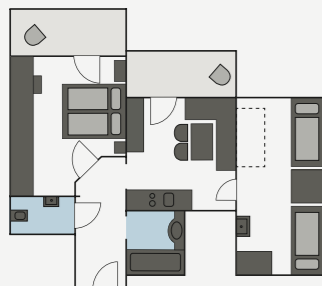
540	482	434	385	327	from 4 nights
560	501	450	401	340	to 3 nights



APARTMENT F approx. 44 m² (4 pers.)

1 double room, 1 bedroom with 2 beds, living room with dining area, kitchenette, bathroom with bath/shower and toilet, TV, telephone, safe, WIFI, Suite-Pad

551	492	443	393	335	from 4 nights
573	511	460	409	347	to 3 nights



APARTMENT SMALL approx. 44 m² (4 pers.)

1 double room, 1 bedroom (pitched roof) with 2 beds (5th bed possible), living room with dining area, kitchenette, bathroom with bath/shower and separate toilet, TV, telephone, safe, WIFI, Suite-Pad

518	462	416	370	314	from 4 nights
539	482	434	385	327	to 3 nights

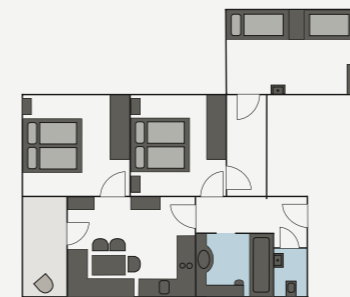
21.12.18 - 06.01.19 16.02. - 09.03.19	01.02. - 16.02.19 09.03. - 16.03.19	06.01. - 13.01.19 16.03. - 23.03.19 30.03. - 23.04.19	14.12. - 21.12.18 13.01. - 01.02.19 23.03. - 30.03.19	07.12. - 14.12.18
--	--	---	---	-------------------



APARTMENT LARGE approx. 60 m² (4 pers.)

1 double room, 1 bedroom (pitched roof) with 2 beds (5th bed possible), living room with lounge and dining area, kitchenette, bathroom with bath/shower and separate toilet, TV, telephone, safe, WIFI, Suite-Pad

570	508	457	407	345	from 4 nights
590	527	475	421	357	to 3 nights

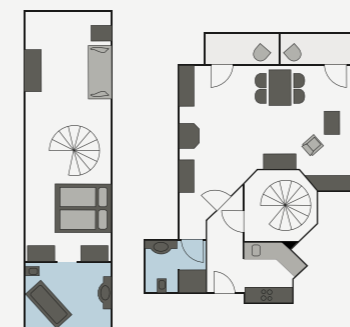


APARTMENT G approx. 70 m² (6 pers.)

2 double room, 1 bedroom (pitched roof) with 2 beds (7th bed possible), living room + dining area, kitchenette, bathroom with bath/shower and separate toilet, TV, telephone, safe, WIFI, Suite-Pad

Daily tariff for 6 people

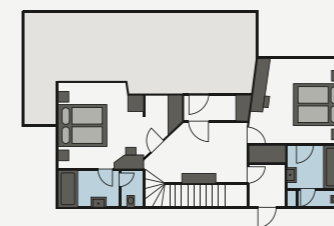
628	561	505	449	381	from 4 nights
649	580	522	464	393	to 3 nights



APARTMENT OMESHORN approx. 85 m² (4 - 5 pers.)

situated in our „Schöpfli“ opposite the hotel. Ground floor: kitchen, living room + couch bed for 2 people, dining area + small bathroom with shower/toilet. First floor: double room, living room + couch bed, bathroom with tub. TV, telephone, safe, WIFI, Suite-Pad

675	603	543	482	410	from 4 nights
696	622	559	496	422	to 3 nights



CHALET approx. 115 m² (7 pers.)

2 floors in a separate building opposite the hotel but with an access to the hotel and swimmingpool. 3 double room with bath/toilet, 1 single room with shower/toilet, living room, kitchen, dining area, balcony and terrace, shoeroom, washing machine and dryer. TV, telephone, safe, WIFI, Suite-Pad

price for 7 people

1.348	953	857	762	647	from 4 nights
1.380	982	883	785	666	to 3 nights