

HOTEL ROOMS

PRICES 2022/2023



FACILITIES

All rooms are equipped with a bathtub or shower, WC, hair dryer, bathrobe, slippers, minibar, satellite TV, telephone, safe and Wi-Fi. All rooms are non-smoking. Dogs are not permitted in the hotel.

INCLUDES

Hotel prices are in euros per person per day incl. a garage parking space.

WHAT IT INCLUDES

- half board with extensive breakfast buffet
- afternoon cake
- 6-course evening menu (€10 discount for cancelled dinners)
- use of the pool complex
- use of the wellness area
- use of the fitness room
- 'Teddy Club' hotel kindergarten for children aged 3 and above
- cot, baby jogger, children's playroom
- facilities for youngsters
- use of the garage, internet access

EXCLUDES

Local tax €3.80 per person aged 14 or over per day.

Extra bed for children with two full paying adults per day including half board:

0-2 years of age	no charge
3-6 years of age	€61
7-10 years of age	€78
11-13 years of age	€91

WE ALSO OFFER

- massages, solarium
- babysitter service
- laundry service
- newspaper service

PRICES - SEASONS A-E

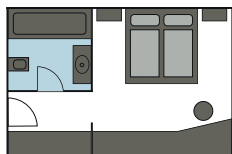
Our seasons are divided into 5 categories: A to E. Please see the prices for the respective category.

THE SEASONS AT A GLANCE

SEASON A	SEASON B	SEASON C	SEASON D	SEASON E
16.12.-08.01. 11.02.-25.02.	28.01.-11.02. 25.02.-18.03. 01.04.-11.04.	18.03.-01.04.	08.01.-28.01. 11.04.-16.04.	02.12.-16.12.

Price in €

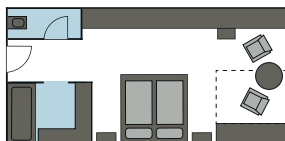
Season A | Season B | Season C | Season D | Season E



DOUBLE ROOM (approx. 20 m²)

Bath/WC, TV, telephone, safe, minibar, Wi-Fi

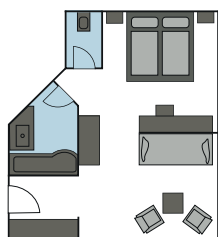
305	265	239	212	184	from 4 nights
310	279	251	221	192	bis 3 Nächte



COMFORT DOUBLE ROOM (approx. 27 m²)

Bath, separate WC, seating area, TV, telephone, safe, minibar, Wi-Fi

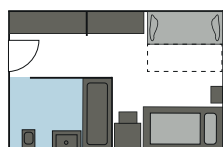
328	295	265	233	203	from 4 nights
343	306	276	242	212	up to 3 nights



JUNIOR SUITE (approx. 35 m²)

Bath, separate WC, large living area, TV, telephone, safe, minibar, Wi-Fi

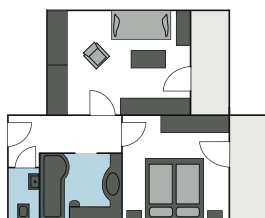
351	314	281	248	218	from 4 nights
364	323	291	275	226	up to 3 nights



SINGLE ROOM (approx. 17–20 m²)

Bath or shower/WC, TV, telephone, safe, minibar, Wi-Fi

351	314	281	248	218	from 4 nights
364	323	291	257	226	up to 3 nights



FAMILY ROOM (approx. 35–40 m²)

Children's room separate or in the living area, bath/WC, TV, telephone, safe, minibar, Wi-Fi

372	333	300	263	230	from 4 nights
384	345	310	272	238	up to 3 nights

ADDITIONAL BED WITH HALF-BOARD

166	149	134	121	107
-----	-----	-----	-----	-----

APARTMENTS

PRICES 2022/2023

FACILITIES

All the apartments feature a bath, WC, kitchenette with double hotplate, refrigerator and dishwasher, Nespresso machine, dining area, crockery, bed-linen, towels, hair dryer, bathrobe, slippers, TV, telephone, safe, Wi-Fi and balcony (except the 'large attic apartment'). All the apartments are non-smoking.

INCLUDES

Apartment prices are in euro per day for 4 people (apart from apartment G and the country house 'Chalet'). What it includes:

- electricity, heating, VAT
- daily cleaning (except the kitchen) plus final cleaning
- all the amenities of the hotel
- use of the garage

EXCLUDES

Local tax €3.80 per person aged 14 or over per day

ADDITIONAL OPTIONS

Half board per person per night €105
can be booked for the entire stay only
(discount for cancelled dinners: €10)

AVAILABLE FOR INDIVIDUAL DAYS

- breakfast €30
- dinner €85
- kitchen cleaning €32
- dog per day, excluding food €30

UNDER OR OVER OCCUPANCY

- surcharge for 5th person per day plus €30

ADDITIONAL OPTIONS FOR CHILDREN

	breakfast	dinner	half board
3-6 years	€15	€24	€35
7-10 years	€21	€38	€54
11-13 years	€26	€49	€72

THE SEASONS AT A GLANCE

SEASON A

16.12.-08.01.
11.02.-25.02.

SEASON B

28.01.-11.02.
25.02.-18.03.
01.04.-11.04.

SEASON C

18.03.-01.04.

SEASON D

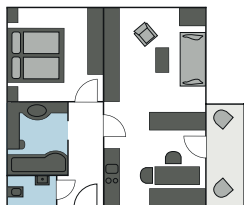
08.01.-28.01.
11.04.-16.04.

SEASON E

02.12.-16.12.

Price in €

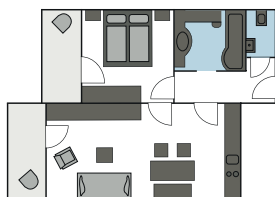
Season A | Season B | Season C | Season D | Season E



APARTMENT A approx. 50 m²

1 bedroom, 1 living room with seating area (2 - 3 sofa beds can be provided), kitchenette, dining area, bathroom with bathtub/shower, sep. WC, TV, telephone, safe, Wi-Fi

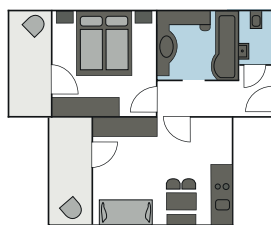
622	554	499	440	373	from 4 nights
646	578	520	461	388	up to 3 nights



APARTMENT B approx. 44 m²

1 bedroom, 1 living room with seating area (2 - 3 sofa beds can be provided), kitchenette, dining area, bathroom with bathtub/shower, sep. WC, TV, telephone, safe, Wi-Fi

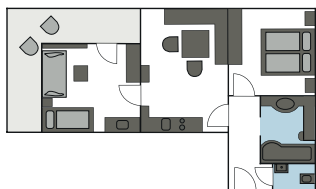
622	554	499	440	373	from 4 nights
646	578	520	461	388	up to 3 nights



APARTMENT C approx. 40 m²

1 bedroom, 1 living room with seating area (2 sofa beds can be provided), kitchenette, dining area, bathroom with bathtub/shower, sep. WC, TV, telephone, safe, Wi-Fi

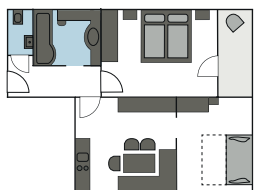
578	516	464	408	347	from 4 nights
601	539	485	427	362	up to 3 nights



APARTMENT D approx. 54 m²

1 bedroom, 1 children's room with 2 - 3 beds (1 bunk bed, 1 sofa bed) and children's washbasin, 1 living room with dining area, kitchenette, bathroom with bathtub/shower, sep. WC, TV, telephone, safe, Wi-Fi

694	621	559	491	417	from 4 nights
719	641	578	508	432	up to 3 nights



APARTMENT D SOUTH approx. 56 m²

1 bedroom, 1 children's room with 2 - 3 beds (1 bunk bed, 1 double sofa bed), 1 living room with dining area, kitchenette, bathroom with bathtub/shower, sep. WC, TV, telephone, safe, Wi-Fi

676	602	542	478	407	from 4 nights
701	626	564	496	419	up to 3 nights

APARTMENTS

PRICES 2022/2023

THE SEASONS AT A GLANCE

SEASON A

16.12.–08.01.
11.02.–25.02.

SEASON B

28.01.–11.02.
25.02.–18.03.
01.04.–11.04.

SEASON C

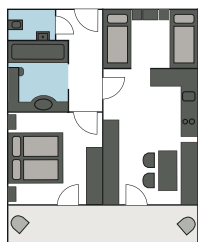
18.03.–01.04.

SEASON D

08.01.–28.01.
11.04.–16.04.

SEASON E

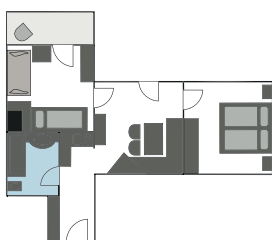
02.12.–16.12.



APARTMENT E approx. 44 m²

1 bedroom, 1 small children's room 1 bunk bed, 1 single bed, living room with dining area, kitchenette, bathroom with bathtub/shower, sep. WC, TV, telephone, safe, Wi-Fi

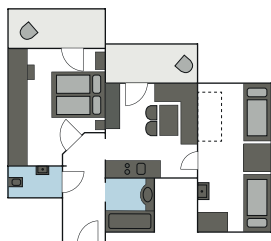
652	581	523	460	392	from 4 nights
676	602	542	478	406	up to 3 nights



APARTMENT F approx. 44 m²

1 bedroom, 1 children's room with 2 - 3 beds (1 bunk bed, 1 sofa bed), living room with dining area, kitchenette, bathroom with bathtub/shower and WC, TV, telephone, safe, Wi-Fi

652	581	523	460	392	from 4 nights
676	602	542	478	406	up to 3 nights



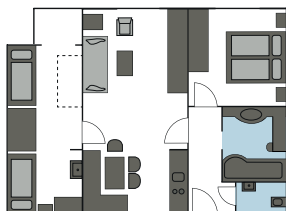
SMALL ATTIC APARTMENT approx. 44 m²

1 bedroom, 1 children's room (sloping roof) with 2 beds (5th bed possible), living room with dining area, kitchenette, bathroom with bathtub/shower, sep. WC, TV, telephone, safe, Wi-Fi

622	554	499	440	373	from 4 nights
646	578	520	461	388	up to 3 nights

Price in €

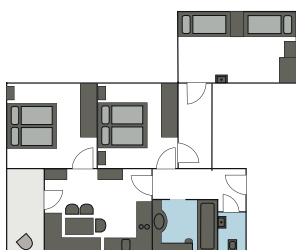
Season A | Season B | Season C | Season D | Season E



LARGE ATTIC APARTMENT approx. 60 m²

1 bedroom, 1 children's room (sloping roof) with 2 beds (5th bed possible), living room with seating area and dining area (2 sofa beds possible), kitchenette, bathroom with bathtub/shower, sep. WC, TV, telephone, safe, Wi-Fi

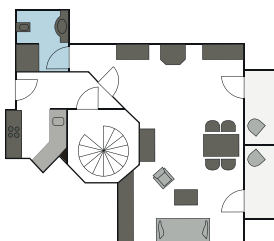
672	599	539	476	403	from 4 nights
697	623	561	492	417	up to 3 nights



APARTMENT G approx. 70 m²

2 bedrooms, 1 children's room (sloping roof) with 2 beds (7th bed possible), living room with dining area, kitchenette, bathroom with bathtub/shower, sep. WC, TV, telephone, safe, Wi-Fi. **Price for 6 people**

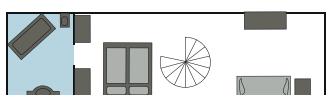
742	662	596	524	445	from 4 nights
766	685	616	542	460	up to 3 nights



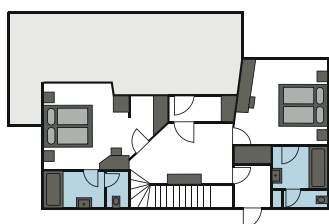
OMESHORN APARTMENT approx. 85 m²

In the 'Schöpfli' opposite the main building.

Ground floor: kitchen, living room with pull-out sofa for 2 persons, dining area, small bathroom with shower/WC, TV, telephone, safe, Wi-Fi
First floor: Bedroom, bathroom with bathtub/WC, living room with sofa bed



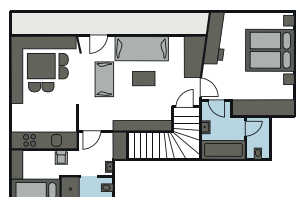
797	712	641	563	479	from 4 nights
822	735	661	580	493	up to 3 nights



COUNTRY HOUSE 'CHALET' approx. 115 m²

2 storeys in a separate building opposite the hotel with direct access to the hotel and indoor pool. 3 double bedrooms with bath/WC, 1 single room with shower/WC, living room, kitchen, dining area, balcony and terrace, boot room, TV, telephone, safe, Wi-Fi.

Price for 7 people



1.591	1.126	1.012	891	756	from 4 nights
1.629	1.159	1.042	918	779	up to 3 nights