

# HOTEL ROOM RATES

## ROOM FEATURES AND FURNISHINGS

All rooms feature a bathroom or shower, WC, hair dryer, bathrobe(s) and slippers, minibar, satellite TV, iPads, telephone, safe and wifi. All rooms are non smoking rooms and dogs are not allowed in the hotel.

## INCLUSIVE

The hotel rate is in Euro per person per day.

## Included are

- Half-board with a large breakfast buffet, afternoon cake, 5-course evening menu (deduction for cancelled dinner EUR 10)
- Use of the pool facilities
- Use of the wellness area
- Fitness room
- Hotel kindergarten "Teddy Club" children above 3 years of age; baby cot, baby jogger, children's playroom, youth room
- Use of garage, WLAN

## EXCLUSIVE

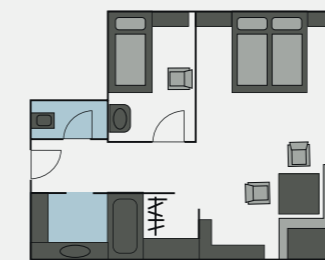
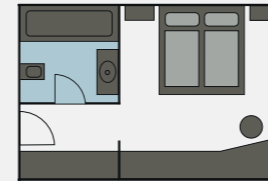
Local tourist tax EUR 2.40 per person from age 14, per day.

Extra bed for children with two adults paying in full, per day incl. half board

0 - 2 years of age	no charge
3 - 6 years of age	EUR 30
7 - 10 years of age	EUR 40
11 - 13 years of age	EUR 50

## ADDITIONAL SERVICES

- Massages, Solarium
- Babysitter service
- Laundry service
- Newspaper service



19.06. - 13.07.19  
24.08. - 08.09.19

13.07. - 24.08.19

## DOUBLE ROOM (approx. 20 m<sup>2</sup>)

Bath/WC, satellite TV, telephone, iPad, safe, minibar, wifi

103	112	from 4 nights
106	115	to 3 nights

## COMFORT DOUBLE ROOM (approx. 27 m<sup>2</sup>)

Bath, sep. WC, satellite TV, telephone, iPad, safe, minibar, wifi

112	123	from 4 nights
115	127	to 3 nights

## JUNIOR SUITE (approx. 35 m<sup>2</sup>)

Bath, sep. WC, large living area, satellite TV, telephone, iPad, safe, minibar, wifi

123	135	from 4 nights
127	138	to 3 nights

## SINGLE ROOM (approx. 17 - 20 m<sup>2</sup>)

Bath or shower/WC, satellite TV, telephone, iPad, safe, minibar, wifi

123	135	from 4 nights
127	138	to 3 nights

## FAMILY ROOM (approx. 35 - 40 m<sup>2</sup>)

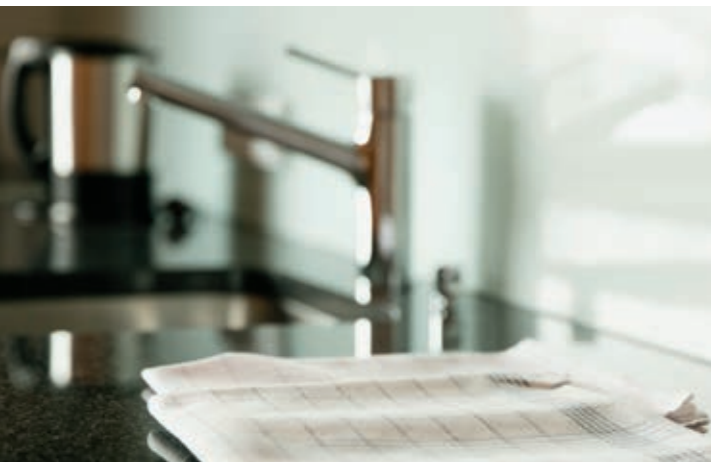
Children's room sep. or in the living area, bath/WC, satellite TV, telephone, iPad, safe, minibar, wifi

137	149	from 4 nights
140	152	to 3 nights

## EXTRA BED WITH HALF BOARD

67	72
----	----

# APARTMENT RATES



## APARTMENT FEATURES AND FURNISHINGS

All apartments feature a bathroom, WC, kitchenette with double burner stove top, refrigerator, dish washer, Nespresso machine, bathrobe(s) and slippers, dining corner, bed linen, hair dryer, Satellite TV, telephone, iPad, safe, wifi and Balcony (except for "Large Attic Apartment"). All apartments are non-smoking apartments.

## INCLUSIVE

The apartment rate is in Euro per day for 4 persons (except for Apartment G and the Chalet). Included are

- Electricity, Heat, VAT
- Daily cleaning (except kitchen) and final cleaning
- All amenities offered by the hotel (see page 36)
- Garage space

## EXCLUSIVE

Local tourist tax EUR 2.40 per person from age 14, per day.

## OPTIONAL

- Half board EUR 69
- Deduction for reserved dinner EUR 10

## OPTIONAL FOR SELECT DAYS

- Breakfast EUR 22
- Dinner EUR 56
- Kitchen cleaning EUR 15
- Dog per day without food EUR 19

## LOWER - OR ADDITIONAL OCCUPANCY

- Occupancy with only 3 persons minus EUR 10
- Occupancy with only 2 persons minus EUR 20
- Occupancy for additional 5<sup>th</sup> person EUR 15

## ADDITIONAL OPTIONS FOR CHILDREN

	Child breakfast	Child dinner	Child half board
3 - 6 years	EUR 9	EUR 15	EUR 22
7 - 10 years	EUR 12	EUR 22	EUR 32
11 - 13 years	EUR 17	EUR 32	EUR 42

19.06. - 13.07.19  
24.08. - 08.09.19

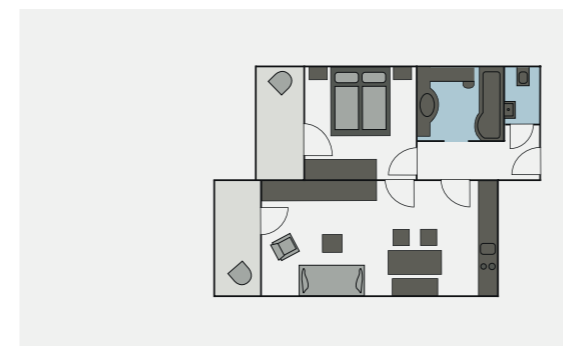
13.07. - 24.08.19



## APARTMENT A approx. 50 m<sup>2</sup> (4 pers.)

1 bedroom, 1 Living room with seating corner (2 - 3 sofa beds possible), kitchenette, dining area, bath with tub/shower, sep. WC, satellite TV, telephone, iPad, safe, wifi

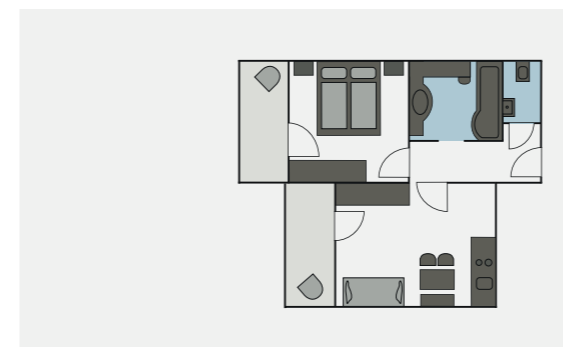
152	180	from 4 nights
158	186	to 3 nights



## APARTMENT B approx. 44 m<sup>2</sup> (4 pers.)

1 bedroom, 1 living room with seating corner (2 - 3 sofa beds possible), kitchenette, dining area, bath with tub/shower, sep. WC, satellite TV, telephone, iPad, safe, wifi

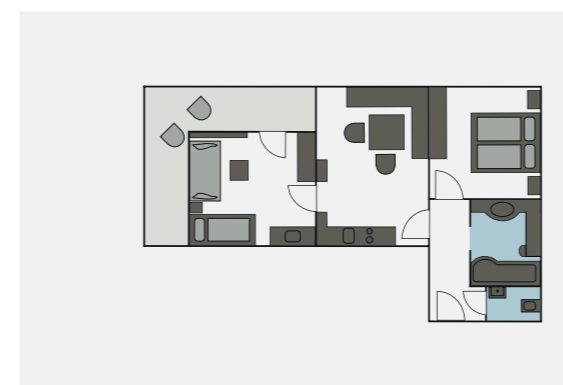
152	180	from 4 nights
158	186	to 3 nights



## APARTMENT C approx. 40 m<sup>2</sup> (4 pers.)

1 bedroom, 1 living room with seating corner 2 sofa beds possible), kitchenette, dining area, bath with tub/shower, sep. WC, satellite TV, telephone, iPad, safe, wifi

132	159	from 4 nights
138	166	to 3 nights



## APARTMENT D approx. 54 m<sup>2</sup> (4 pers.)

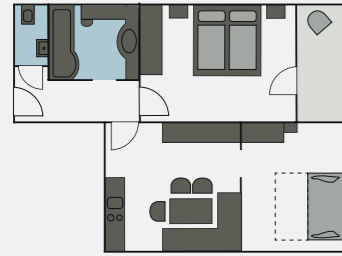
1 bedroom, 1 children's room with 2 - 3 beds (1 Bunk bed, 1 Sofa bed) and children's wash basin, 1 living room with dining area, kitchenette, bath with tub/shower, sep. WC, satellite TV, telephone, iPad, safe, wifi

190	225	from 4 nights
198	231	to 3 nights

# APARTMENT RATES

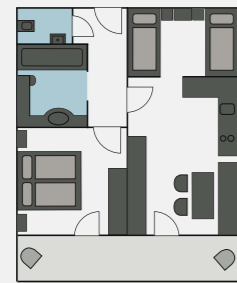
19.06. - 13.07.19  
24.08. - 08.09.19

13.07. - 24.08.19



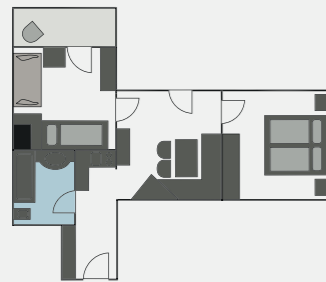
**APARTMENT D SOUTH** approx. 56 m<sup>2</sup> (4 pers.)  
1 bedroom, 1 children's room with 2 - 3 beds (1 bunk bed, 1 double sofa bed), 1 living room with dining corner, kitchenette, bath with tub/shower, sep. WC, satellite TV telephone, iPad, safe, wifi

181	215	from 4 nights
187	222	to 3 nights



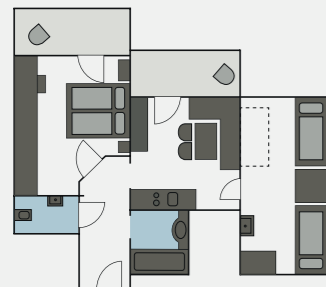
**APARTMENT E** approx. 44 m<sup>2</sup> (4 pers.)  
1 bedroom, 1 small children's room with 2 - 3 beds (5. bed as bunk bed possible), living room with dining corner, kitchenette, bath with tub/shower, sep. WC, satellite TV telephone, iPad, safe, wifi

159	190	from 4 nights
166	198	to 3 nights



**APARTMENT F** approx. 44 m<sup>2</sup> (4 pers.)  
1 bedroom, 1 children's room with 2 - 3 beds (1 bunk bed, 1 Sofa bed), living room with dining corner, kitchenette, bath with tub/shower and WC, satellite TV, telephone, iPad, safe, wifi

179	213	from 4 nights
185	219	to 3 nights



**APARTMENT SMALL WITH ATTIC ROOM**  
approx. 44 m<sup>2</sup> (4 pers.)  
1 bedroom, 1 children's room (slanted ceiling) with 2 beds (5. bed possible), living room with dining corner, kitchenette, bath with tub/shower, sep. WC, satellite TV telephone, iPad, safe, wifi

151	180	from 4 nights
158	186	to 3 nights

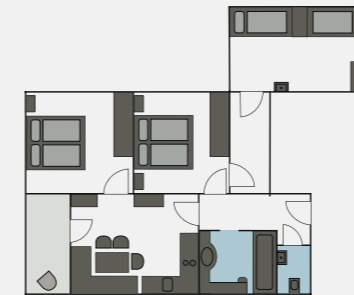
19.06. - 13.07.19  
24.08. - 08.09.19

13.07. - 24.08.19



**APARTMENT LARGE WITH ATTIC ROOM** approx. 60 m<sup>2</sup> (4 pers.)  
1 bedroom, 1 children's room (slanted ceiling) with 2 beds (5<sup>th</sup> bed possible), living room with seating corner and dining corner (2 sofa beds possible), kitchenette, bath with tub/shower, sep. WC, satellite TV telephone, iPad, safe, wifi

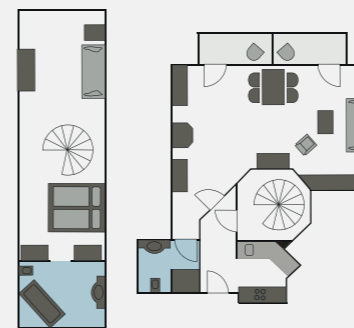
177	209	from 4 nights
183	215	to 3 nights



**APARTMENT G** approx. 70 m<sup>2</sup> (6 pers.)  
2 bedroom, 1 children's room (slanted ceiling) with 2 beds (7. bed possible), living room with dining corner, kitchenette, bath with tub/shower, sep. WC, satellite TV telephone, iPad, safe, wifi

Rate for 6 persons

215	250	from 4 nights
224	259	to 3 nights



**APARTMENT OMESHORN** approx. 85 m<sup>2</sup> (4 - 5 pers.)  
In the "Schöpfli" house opposite the main house.  
1st floor: kitchen, living room with pull-out sofa bed for 2 persons, dining area, small bath with shower/WC, satellite TV, telephone, iPad, safe, wifi  
2nd floor: bedroom, bath/tub/WC, living room with sofa bed.

217	251	from 4 nights
225	258	to 3 nights



**THE CHALET** approx. 115 m<sup>2</sup> (7 pers.)  
2 floors directly opposite the hotel with direct access to the hotel and indoor swimming pool. 3 double rooms with bath/WC, 1 single room with shower/WC, living room, kitchen, dining corner, balcony and terrace, shoe storage room, satellite TV, telephone, iPad, safe, wifi

Rate for 7 persons

280	324	from 4 nights
290	335	to 3 nights